

# **Winnet Centre of Excellence and its Research Agenda**

Marta Hozer-Koćmiel  
University of Szczecin,  
Winnet Centre of Excellence

‘Gender, Innovation and Sustainable Growth. Research and Practice’ Seminar,  
20-21.11.2014, Szczecin

**What** is **Winnet Centre of Excellence**  
and what has already been done?

**Why** we do that?

**Who** are the **actors**  
involved in the project?

**What** is in the **Research Agenda**  
and when we plan to do that?

**What** is **Winnet Centre of Excellence**  
and what has already been done?

**Why** we do that?

**Who** are the **actors**  
involved in the project?

**What** is in the **Research Agenda**  
and when we plan to do that?

**FEM - Female Entrepreneurs Meetings in the Baltic Sea Region,  
Baltic Sea Region Interreg III B (August 2004 - July 2007)**

The aim of FEM was to strengthen the structures that support women's entrepreneurship through co-operation and the exchange of knowledge and best practices

**W.IN.NET Europe, Interreg IIIC (2006 - 2008)**

The aim was to create WINNET Europe - the European Association of Women Resource Centres

**Women In Net 8, WINNET8, Interreg IVC (2010 - 2011)**

The objective was contribute to regional growth by improving women's participation in the labour market, focusing on: the lack of women in innovation and technology, the lack of women in entrepreneurship

**Thematic Partnership Winnet Baltic Sea Region,  
Winnet BSR, Swedish Institute (2013 - 2016)**

One of the aim is to create the BSR Partnership Platform for Gender, Innovation and Sustainable Development and the Winnet Centre of Excellence for Gender and Economic Researchers



**Winnet Centre of Excellence** – the international network of researchers in the Baltic Sea Region for the purpose of doing and promoting policy oriented research on Gender, Innovation and Growth.

**Women Resource Centre** – the network of practitioners that aims to 1. empower women, 2. be a neutral meeting place for networking groups of women, 3. be a centre for information and documentation, 4. provide women with advice on how to implement their projects or business ideas, 5. mediate contacts with others women's networks.

**What** is **Winnet Centre of Excellence**  
and what has already been done?

**Why** we do that?

**Who** are the **actors**  
involved in the project?

**What** is in the **Research Agenda**  
and when we plan to do that?

**1.**

**Because** of the **lack of policy oriented research on Gender**, Innovation and Growth from a macro perspective

**2.**

**Because** of the **lack of Gender Equity** perspective in many economics' faculties across BSR

**3.**

**Because** of the **need of integration and common training** program for Gender & Economics Researchers

**4.**

**Because** of the **need of platform** linking research (WCE) and business environment (WRC)



**What** is **Winnet Centre of Excellence**  
and what has already been done?

**Why** we do that?

**Who** are the **actors**  
involved in the project?

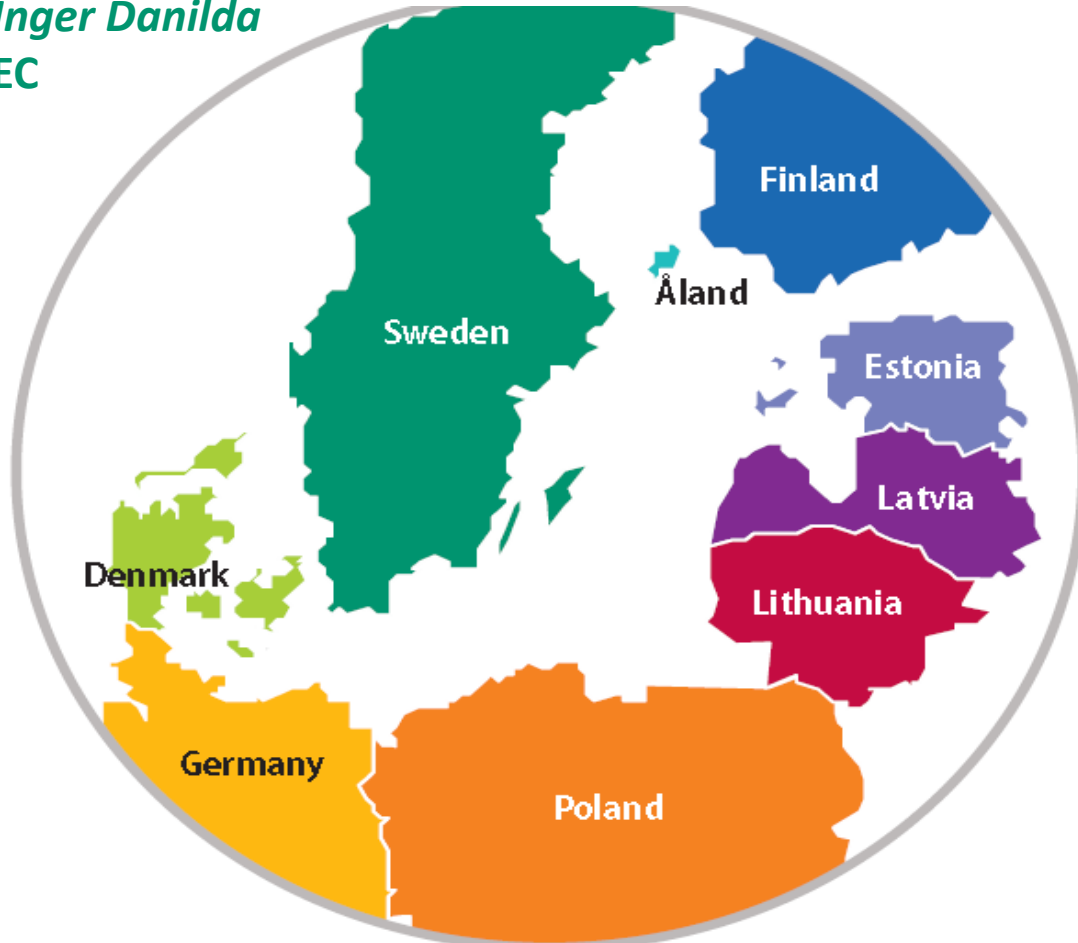
**What** is in the **Research Agenda**  
and when we plan to do that?

*Elisabeth Sundin*  
Linköping University

*Åsa Löfström*  
Umeå University

*Ewa Gunnarsson*  
Luleå University of Technology

*Inger Danilda*  
EC



*Gina Kilumets*  
ETNA

*Iveta Baltina*  
Riga Technical University

*Lilija Kublickiene*  
Lithuanian Centre for Social Research

*Ewa Okoń-Horodyńska*  
*Anna Zachorowska-Mazurkiewicz*  
Jagiellonian University

*Dorota Witkowska*  
University of Lodz

*Marta Hozer- Kocmiel*  
*Sandra Misiak*  
University of Szczecin

*Ewa Ruminska-Zimny*  
*Ewa Lisowska*  
Warsaw School of Economics

*Karina Tomaszewska*  
West Pomeranian University of Technology

**What** is **Winnet Centre of Excellence**  
and what has already been done?

**Why** we do that?

**Who** are the **actors**  
involved in the project?

**What** is in the **Research Agenda**  
and when we plan to do that?

# **Research plan**

## **for The Winnet Centre of Excellence**

**WP Stock taking of existing research on gender, innovation and economic growth/sustainable development (end Dec 2014)**

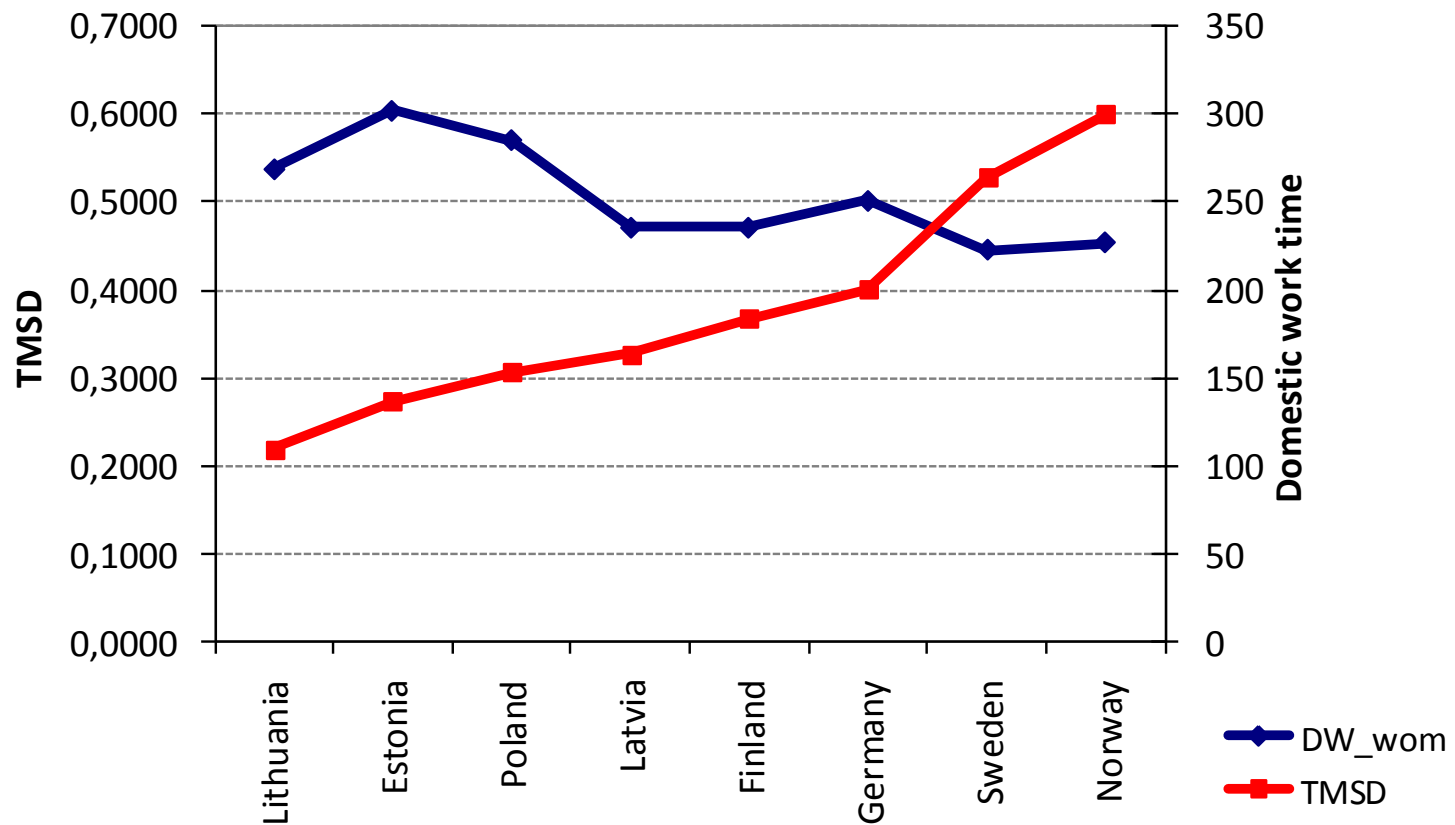
Oct 2013, Luleå, Sweden - 'Modelling of the relation between gender equality and growth in BSR countries', conference EGI 'Equality, growth and innovation – in theory and practice'.

**Unpaid work concept included.**

**The more paid/market work for women and men the more sustainably developed the BSR country.**

**The more men's unpaid work the more sustainably developed the BSR country.**

# The more women's unpaid domestic work the less sustainably developed the BSR country



# **WP Gender analysis of the SMEs in ICT and tourism in the BSR - quantitative approach (end March 2015)**

**Methods:** descriptive statistics, elements of the time series analysis and correlation analysis will be applied

## **Statistical Portrait of Women in ICT in BSR countries.**

*In Report 'Baltic Sea Region Conference with focus on Gender ICT', Winnet Sverige, Stockholm, 2012, M.Hozer-Kocmiel and U. Zimoch*

## **Gender analysis of the present situation in Germany, Lithuania and Sweden – labour market, entrepreneurship, cross border exchange in trade and business cooperation.**

*Winnet Sweden, Region Skane, Malmo, 2012, M. Hozer-Kocmiel, U. Zimoch*

## **7 reasons why women's entrepreneurship is worth promoting in the Mare Balticum countries,**

*chapter in monograph 'Corporate Social Responsibility and Women's Entrepreneurship around the Mare Balticu', pod red. M. Hogeforster & P. Jarke, Baltic Sea Academy, Hamburg 2014, M. Hozer-Kocmiel, B.M. Torstensson, S. Misiak*

**WP The analysis of Women Resource Centers' potential as actors increasing Women's participation in SME, Innovation and Economic Growth  
(end June 2015)**

- 1.** Number of women inventor/innovator entrepreneurs in Europe **is low**;
- 2.** Only **10 %** of patents awarded by the European Patent Office are awarded to women;
- 3.** Less than **15 %** of high-tech business is owned by women;

**Lack of access to relevant technical,  
scientific and general business networks;**

**Economic obstacles;**

**Lack of business training;**



## **WP Pilot survey on women-led SMEs in ICT and tourism (end Dec 2015)**

A survey will cover women-led companies from the ICT and tourism sector in order to find factors increasing innovativeness in BSR.

It will be conducted by means of a dedicated questionnaire with the help of the WINNET web platform for woman innovators.

## **WP The BSR model for Gender Sensitive Entrepreneurship and Innovation Support in ICT and tourism (end June 2016)**

A Call of Proposals will be sent to the researchers constituting the Winnet BSR Partnership Platform

*A book 'Model for Gender Sensitive Framework, Entrepreneurship and Innovation'*

**Women could do anything**  
**if they only knew what it was.**

- Barbra Sher

Thank you for your attention!

**Marta Hozer-Kocmiel**

[mhk@wneiz.pl](mailto:mhk@wneiz.pl)